



# SHOP EQUIPMENT

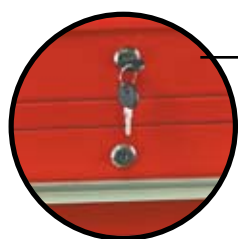
[www.sunextools.com](http://www.sunextools.com)



TABLE OF CONTENTS

	SERVICE CARTS & ACCESSORIES	2
	CREEPERS	10
	SHOP SEATS	11
	SHOP EQUIPMENT	12
	STANDS AND GRINDERS	13
	PRESSES	14
	PRODUCT INDEX	23

## SERVICE CARTS AND ACCESSORIES



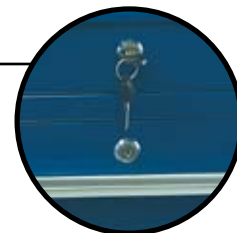
Red



Black



Blue



Yellow



The 8013A & 8013ADLX service carts and accessories (8004, 8006, 8007, 8011 & 8016) are available in red, blue, black & yellow.



### SERVICE CART ECONOMY

- > Large, easy to maneuver 4" wheels: 2 locking and 2 standard
- > Durable powder coated finish
- > 3" Deep shelves (30" long x 16" wide)

Available: Locking Drawer - 8006RB  
Locking screw driver/pry bar holder - 8008

#### 8003SC

Load Capacity (lbs.)	350
Dimensions:	32-1/2" H x 16" W x 30" L
Weight (lbs.)	33.10



### SERVICE CART MULTI-PURPOSE

- > Large, easy to maneuver 4" wheels-2 locking and 2 standard
- > Chrome 16 gauge steel frame
- > Durable powder coated red finish
- > 3" deep shelves (30" long x 16" wide)

Replacement locking caster - RSSCPW  
Replacement non-locking caster - RSSCPW  
Replacement plastic caster holders, set of 4 - RSSCPP1

#### 8005SC

Load Capacity (lbs.)	350
Height (in.)	35.3
Length (in.)	30
Depth (in.)	16
Weight (lbs.)	39.33

## SERVICE CARTS AND ACCESSORIES



### TWO-SHELF SERVICE CART WITH ANODIZED LEGS

- > 4" Easy rolling heavy duty polyurethane swivel casters
- > Ergonomic grip handle
- > 2 Durable polyethylene shelves
- > Anodized aluminum legs

#### 8032

Load Capacity (lbs.) 350

Shelf dimensions: 29-1/2" x 16-3/4" x 2"

Weight (lbs.) 26



### THREE-SHELF SERVICE CART WITH ANODIZED LEGS

- > 4" Easy rolling heavy duty polyurethane swivel casters
- > Ergonomic grip handle
- > 3 Durable polyethylene shelves
- > Anodized aluminum legs
- > Shelf dimensions: 29-1/2" x 16-3/4" x 2"

#### 8033

Load Capacity (lbs.) 500

Shelf dimensions: 29-1/2" x 16-3/4" x 2"

Weight (lbs.) 35



### SERVICE CART WITH LOCKING TOP & DRAWER

- > The locking drawer and locking top use common key
- > Clip-on roller-bearing slides on drawer
- > Large, easy to maneuver 4" wheels - 2 locking and 2 standard
- > Chrome 16 gauge steel frame
- > Durable powder coated finish
- > 3" deep shelves

\* No weight can be put on cart top \*

#### 8013A

Load Capacity (lbs.) 350

Height (in.) 35.3

Length (in.) 30

Depth (in.) 16

Shipping Weight (lbs.) 64.45

COLORS ALSO AVAILABLE:



Blue  
8013ABL



Black  
8013ABK

## SERVICE CARTS AND ACCESSORIES



### SERVICE CART 4 DRAWER, LOCKING TOP

> Cart includes: 3 drawer service cart with leg extensions, large locking screwdriver/pry bar holder, and side work bench.

*\*Drawer liner sold separately*

COLORS ALSO AVAILABLE:



Blue  
**8013ABLDLX**



Black  
**8013ABKDLX**

### 8013ADLX

Load Capacity (lbs.)	350
Dimensions:	32-1/2" H x 16" W x 30" L
Shipping Weight (lbs.)	131.00



### PROFESSIONAL SERVICE CART 5 DRAWER WITH ACCESSORIES

> 5" Oversized casters: 2 locking, 2 non-locking  
> 75% assembled, making it one of the easiest and quickest carts in the market to put together  
> With a flip top locking lid, 5 drawers (three 1.5" deep, one 3" deep and one 5" deep) all pre assembled with common keyed locks, screwdriver/prybar holder, and side work shelf  
> EVA foam drawer liners included  
> Chrome 16 gauge steel frame and powder coated finish

**Optional: 5pc lock set - 8045LS**

**Locking screw driver/pry bar holder - 8008**

COLORS ALSO AVAILABLE:



Blue  
**8045BL**



Black  
**8045BK**

### 8045

Load Capacity (lbs.)	500
Service Cart (ln.)	30L x 16W x 41H
Top Shelf (ln.)	30L x 16W x 3H
Top Two Drawers (ln.)	12.5L x 12.5W x 1.5H
Third Drawer (ln.)	15L x 26.75W x 1.5H
Fourth Drawer (ln.)	15L x 26.57W x 3.75H
Bottom Drawer (ln.)	15L x 26.5W x 5H
Shipping Weight (lbs.)	116.8



### SERVICE CART 2 DRAWER, LOCKING TOP

> 5" Oversized casters: 2 locking, 2 non-locking  
> Ergonomic grip handle  
> Locking top  
> 2 drawers (3-1/4" and 4-1/4" deep)  
> Gas shocks to support lid

COLORS ALSO AVAILABLE:



Black  
**8050BK**

### 8050

Load Capacity (lbs.)	500
Height (in.)	39.5
Length (in.)	33.25
Depth (in.)	20
Shipping Weight (lbs.)	176



## SERVICE CARTS AND ACCESSORIES



### SERVICE CART 4 DRAWER, LOCKING TOP

- > 5" Oversized casters: 2 locking, 2 non-locking
- > Ergonomic grip handle
- > Locking top
- > 2 drawers 3-1/4" and 2 drawers 4-1/4" deep
- > Gas shocks to support lid

#### 8054BK

Load Capacity (lbs.)	500
Height (in.)	39.50
Length (in.)	33.25
Depth (in.)	20
Shipping Weight (lbs.)	176

### HYBRID UTILITY CART 4 DRAWER, SLIDING TOP

- > 5" Oversized casters: 2 locking, 2 non-locking
- > Four drawers with clip on roller bearing slides and drawer liners
- > Sliding top work station with large tool storage compartment area underneath
- > Sliding top compartment includes screwdriver holder and protective rubber mats
- > Cart comes assembled, just attach the handle

#### 8043

Load Capacity (lbs.)	500
Shipping Weight (lbs.)	185.90

COLORS ALSO AVAILABLE:



Black  
**8043BK**



### HEAVY DUTY ADJUSTABLE WORK TABLE

- > Four tray areas: 17" x 20" main tray area, three small compartments - 9.5 x 2.75
- > Rubber tray liner included
- > 1" tray depth

#### 8018

Capacity (Lbs)	220
Low Height (in.)	34
High Height (in.)	47.75
Tray Dimensions (in.)	29x20x1
Caster Size (in.)	2
Shipping Weight (lbs.)	39.7



## SERVICE CARTS AND ACCESSORIES



### HEAVY DUTY ADJUSTABLE WORK TABLE WITH DRAWER

- > New feature designed to house air tools
- > Standard screwdriver and pry bar holder
- > 1" deep drawer for convenient storage

Replacement caster with nut - RS8018CS



New inset groove design allows  
air tools to stand upright.  
*Air tool not included*

#### 8019

Load Capacity (lbs.)	220
Low Height (in.)	34
High Height (in.)	47.75
Tray Dimensions (in.)	29 x 20 x 1
Caster Size (in.)	2
Shipping Weight (lbs.)	35.2



### LOCKING SCREWDRIVER/PRYBAR HOLDER FOR SERVICE CART

- > Attaches to 8003SC, 8005SC & 8013A and most other carts (drill holes to attach)
- > Locking lid for security, 2 keys included
- > Durable red powder coated finish

#### 8008

Capacity	14 items
Dimensions: 3-1/2" H x 9-1/8" W x 10-7/8" L	



### LARGE LOCKING SCREWDRIVER/ PRYBAR HOLDER FOR SERVICE CART

- > Attaches to 8003SC, 8005SC & 8013A and most other carts (drill holes to attach)
- > Holds up to 26 items
- > 3 different hole sizes: 1", 3/4", and 1/2" diameters
- > Locking lid for security
- > Durable powder coated finish

#### 8011

Dimensions: 10-7/8" L x 16-1/8" W x 4" H

COLORS ALSO AVAILABLE:



Blue  
**8011BL**



Black  
**8011BK**



Yellow  
**8011Y**



### SIDE WORK BENCH FOR 8013A

- > 30 lb. capacity
- > Folds down when not in use for storage

#### 8004

COLORS ALSO AVAILABLE:



Blue  
**8004BL**



Black  
**8004BK**



Yellow  
**8004Y**

## SERVICE CARTS AND ACCESSORIES



### STORAGE DRAWER FOR SERVICE CART

- > Clip-on roller-bearing slides
- > Attaches to 8005SC & 8013A and most other carts with an inner leg length of at least 28"
- > Up to 2 drawers can be installed on the same cart
- > Durable powder coated finish

#### 8006RB

Drawer Dimensions: 30" L x 16" W x 3" H

COLORS ALSO AVAILABLE:



Blue  
**8006CRBBL**



Black  
**8006CRBBK**



Yellow  
**8006CRBY**



### THIRD SHELF FOR SERVICE CART

- > Attaches to 8005SC & 8013A and most other carts
- > Durable powder coated finish

#### 8007

Dimensions: 30" L x 16" W x 3" H

COLORS ALSO AVAILABLE:



Blue  
**8007BL1**



Black  
**8007BK**



Yellow  
**8007Y**



### 3 DRAWER UNIT FOR SERVICE CART

- > Clip-on roller-bearing slides
- > Attaches to 8005SC & 8013A and most other carts
- > Up to 2 units can be installed on the same cart
- > Durable powder coated finish

#### 8016

Drawer dimensions:

Small Drawers: 1.5" D x 15" L x 12.25" W

Large Drawer: 1.5" D x 15" L x 26.5" W

COLORS ALSO AVAILABLE:



Blue  
**8016BL**



Black  
**8016BK**



Yellow  
**8016Y**



## SERVICE CARTS AND ACCESSORIES



### SERVICE CART STORAGE BIN

- > For use with service carts
- > Perfect for storing tools and parts
- > 1.2mm steel

**8023**

Dimensions: 16-1/4" W x 7-1/8" D x 3-1/8" H



### SERVICE CART AIR TOOL AND HOSE RACK ACCESSORY

- > For use with service carts
- > Perfect for keeping air tools and hoses organized and accessible
- > 16-1/8" wide x 3-1/4" deep x 2-7/8" high
- > 1.2mm steel

**8027**

Dimensions: 16-1/8" W x 3-1/4" D x 2-7/8" H



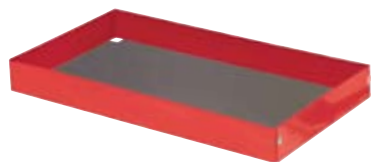
### MANUAL RACK FOR SERVICE CART

- > For use with service carts
- > Perfect for organizing and storing important papers, catalogs, magazines and manuals
- > 1.2mm steel

**8028**

Dimensions: 16-1/8" W x 3-1/4" D x 12" H

## SERVICE CARTS AND ACCESSORIES



### EVA FOAM FOR SERVICE CART TRAY

- > Resistant to most grease and solvents
- > Cut to fit in the service cart tray
- > Dimensions: 30" x 16" Flat

**1110**

Quantity included	10
-------------------	----



### EVA FOAM FOR SERVICE CART DRAWER

- > Resistant to most grease and solvents
- > Cut to fit in the service cart drawer
- > Dimensions: 30" x 16" Flat

**1111**

Quantity included	10
-------------------	----



### RUBBER LINER FOR SERVICE CART SIDE SHELF

- > Resistant to most grease and solvents
- > Cut to fit 8004 series service cart side shelves
- > 16-1/2" x 14-1/2" with ridges

**8004SSM**

Quantity included	10
-------------------	----



### LEG EXTENSIONS FOR SERVICE CART

- > Add 4.75" to the height of cart
- > Use to maintain shelf clearance when adding additional drawer units
- > Easy to install

**8014**

Length (in.)	4.75
--------------	------



### 4 PIECE LOCK SET FOR SERVICE CART

- > 4 piece lock and key set, all keyed alike

**8013LS**

SET INCLUDES:

Top lock, key & latch

Drawer lock, key & latch

3 drawer unit lock, key & latch

Prybar/screwdriver holder lock, key & latch



## **4 CASTER CREEPER**

- > Powder coated black frame
- > Cushioned red vinyl cover
- > High quality casters for easy rolling

### **8504**

Max Capacity (lbs.)	250
Length (in.)	36
Caster Size (in.)	2.5
Frame dimensions:	36" x 17" x 3.5"



## **6 CASTER CREEPER WITH ADJUSTABLE HEAD REST**

- > Powder coated black frame
- > Frame dimensions: 40" x 17" x 4"
- > Ground clearance: 1-3/4"
- > Cushioned red vinyl cover with adjustable head rest
- > 6 - 2.5" swivel casters make it extremely maneuverable and stable

### **8505**

Max Capacity (lbs.)	250
Length (in.)	40
Caster Size (in.)	2.5
Max Capacity (lbs.)	250
Frame dimensions:	40" x 17" x 4"
Ground clearance:	1-3/4"



## **PLASTIC CREEPER**

- > 40" ergonomically designed frame
- > 6 - 3" swivel casters make it extremely maneuverable and stable
- > 4-3/4" high vinyl covered foam headrest for maximum comfort
- > Two storage trays conveniently located on either side
- > A low profile of 1" allows for greater clearance under vehicles
- > Made of material that is resistant to most solvents, grease and oils found in the common shop

### **8511**

Max Capacity (lbs.)	250
Length (in.)	40

**Replacement caster kit - RS8511CS**



## **COMFORT EXTREME CREEPER**

- > 1" Rugged steel tube construction
- > Oversize frame for added comfort
- > Tapered frame and head rest for extra clearance in tight areas
- > 3-1/2" Heavy duty chrome finished casters with rubber tread
- > 5- Position stick shift headrest adjustment system
- > Rear drop frame design for extra leg comfort

### **8515**

Capacity (lbs.)	300
Length (in.)	45.5
Width (in.)	19
Height (Headrest Down) (in.)	5
Height (Headrest Up) (in.)	9.5
Bed Size	30.625 x 16.5 x 2.5
Head Rest Size (in.)	30.5
Tapered to	10
Height Of Head Rest (in.)	
Position 1	5
Position 2	6
Position 3	7.5
Position 4	8.5
Position 5	9.5

**Replacement caster with nut - RS8515CS**



## PADDED CREEPER SEAT

- > Cushioned vinyl seat with 2" high compression foam
- > Powder coated black frame for long lasting finish
- > 2.5" High quality casters for easy mobility
- > Includes convenient 1" deep parts tray

### 8507

Capacity (lbs.)	300
Seat Dimensions (in.)	8 x 14
Tray Dimensions (in.)	11.5 x 12.5
Frame dimensions:	17"(D) x 14"(H) x 14"(L)



## EZ SET™ PNEUMATIC PROFESSIONAL SHOP SEAT

- > Air cylinder for easy height adjustment
- > Five 2.5" casters for ease of mobility
- > Cushioned black vinyl covered wooden seat
- > Large steel reinforced tool tray

**Replacement caster kit - RS8509WH**  
(Includes 1 caster, 1 nut & 1 lock washer)

### 8509

Max Capacity (lbs.)	300
Seat Diameter (in.)	12.5
High Height (in.)	20.5
Low Height (in.)	15.5
Tool Tray:	Diameter 15.25" Depth 1"



## SWIVEL TRACTOR SEAT

- > Air cylinder for easy height adjustment
- > Five 3-1/2" heavy duty, chrome finished casters with rubber tread for ease of mobility
- > Large steel reinforced tool tray

**Replacement caster with nut - RS8515CS**

### 8514

Low Height (in.)	18
High Height (in.)	22
Seat Width (in.)	16
Tool Tray:	Diameter 17" Depth 1"



## 18" OVERSIZED SWIVEL TRACTOR SEAT

- > 18" wide, cushioned seat for maximum comfort
- > Well balanced round base includes five 2-1/2" casters for smooth and easy movement
- > Large, reinforced 17" diameter 1" deep tool tray

**Replacement caster kit - RS8509WH**  
(Includes 1 caster, 1 nut & 1 lock washer)

### 8518

Low Height (in.)	16
High Height (in.)	21
Seat Width (in.)	18
Seat Depth (in.)	14
Tool Tray:	Diameter 17" Depth 1"



## REPLACEMENT CASTER ASSEMBLIES

- > Includes:  
1 caster, 2 inserts, & 2 lock washers

### 8502 & 8503

2" Caster Assembly	8502
2.5" Caster Assembly	8503
5/16" Shaft	



## BENCH GRINDER STAND

- > Sturdy base with pre-drilled holes for mounting on floors
- > Use with 5001A & 5002A and other 6" or 8" bench grinders

### 5003

Base Mounting Area (in.)	10.5 x 7.5
Height (in.)	36
Pipe Shaft Dimensions:	diameter 3" height 26-5/8"



## 6" VISE

- > 2 locking mechanisms for stability
- > Made from cast iron with steel handle threads

Replacement jaws (1 pair) - RS500405

### 5004

Base Swivel	360°
Max Vise Opening	6"



## 4.5" METAL CUTTING BAND SAW

- > Cuts 45° to 90° angles
- > Converts into vertical saw or horizontal saw
- > Spring loaded motor mount permits quick utilization of the various cutting speeds
- > Cutting capacity: 4-1/2" diameter or 4" x 6"
- > Comes with 24 teeth/in. blade
- > UL & CSL listed

Replacement blade (14 teeth/in.) - RS45016

Replacement blade (24 teeth/in.) - RS45016A

### 5006A

Power	3/4 HP Motor
Blade speeds:	60/120/220 FPM
Blade size:	1/2" x 0.025 x 64-1/2"
Overall Length (in.)	37"
Horizontal height (in.)	36.5
Vertical height (in.)	58"
Adjustable vise size (in.)	4 x 5





## 16 SPEED DRILL PRESS

- > Heavy duty 3/4 HP motor with 5-1/8" drill capacity
- > Convenient belt tension lever for quick speed transition
- > Table rotates 360° and pivots from 0° to 45° on each side with indicator to facilitate setting
- > UL & CSA Listed

**Replacement 5/8" chuck & key - RS5000A87**  
**Fits standard MT2 Arbor**

## 5000A

Power	3/4 HP
Power source	115V
Speeds range	200 - 3850 RPM
Max spindle stroke (in.)	3-1/8
Spindle nose	#2
Diameter of column (in.)	2-3/4
Table diameter (in.)	11-1/2
Height (in.)	61-13/16

## 6" BENCH GRINDER WITH LIGHT

- > Bright, flexible work light
- > Has two 6" grit wheels: coarse 36 and medium 60
- > Each wheel has protective spark guard and adjustable eye shield
- > Mounting holes and rubber feet make grinder easy to mount on a stand (optional - part #5003 or 5005A) or use on an approved worktable or workbench
- > Conveniently placed, easy to use on/off switch
- > Long, 6-foot power cord
- > Cast iron base for durability
- > Ball bearing construction for smooth operation
- > 1/2" Arbor accepts standard 6" wheel
- > Uses regular incandescent light bulbs (check head for max wattage)
- > UL & CSA Listed

**Replacement eye shields - RS500119B**  
**Replacement tool rests - RS500135B**

## 5001A

Power	1/2 HP Motor
No load speed	3450 RPM
Motor	3.5 Amp
Voltage	115V/60Hz

## 8" BENCH GRINDER WITH LIGHT

- > Bright, flexible work light
- > Has two 8" grit wheels: coarse 36 and medium 60
- > Each wheel has protective spark guard and adjustable eye shield
- > Mounting holes and rubber feet make grinder easy to mount on a stand (optional - part #5003 or 5005A) or use on an approved worktable or workbench
- > Conveniently placed, easy to use on/off switch
- > Long, 6-foot power cord
- > Cast iron base for durability
- > Ball bearing construction for smooth operation
- > 5/8" Arbor accepts standard 8" wheel
- > UL & CSA Listed

**Replacement eye shields - RS500219B**  
**Replacement tool rests - RS500135B**

## 5002A

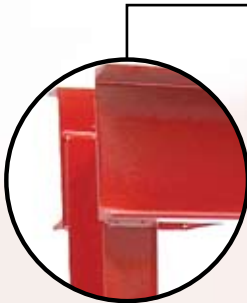
Power	3/4 HP Motor
No load speed	3450 RPM
Motor	5 Amp
Voltage	115V/60Hz

## SUNEX SHOP PRESSES AND ACCESSORIES **BUILT IN THE USA**



Sunex® has over 30 years experience in the design and manufacturing of shop presses and accessories for the automotive, heavy duty truck and industrial markets. Sunex® is the professional technician's most valuable source for heavy duty shop equipment with presses available in all capacities from 12 to 150 ton and your choice of manual, air/hydraulic or electro-hydraulic power supplies. Additional shop press models and information can be obtained by logging on to [www.amerequiplifting.com](http://www.amerequiplifting.com)

All welded steel construction,  
crafted in the USA



Heavy duty ram  
(electric or quick-  
return spring)

Winch bed lift with automatic  
braking (available on 40, 50,  
100 & 150 ton models)



Bed plates and bearing  
punch come standard



## MODEL 5212 12 TON CAPACITY SHOP PRESS

Used for various shop applications including straightening, bending, and removing/ installing gears, bearings and bushings.

### FEATURES:

- > **RapidRise** bottle jack extends ram six times faster to the load than a standard jack.
- > US built welded press frame to prevent excessive flexing under maximum load.
- > Reinforced head bolster for added strength.
- > Heavy duty return springs for fast ram retraction.
- > Pair of bed plates and ram head included.



**MODEL 5212** 12 TON



**MODEL 5220** 20 TON

## MODEL 5220 20 TON CAPACITY SHOP PRESS

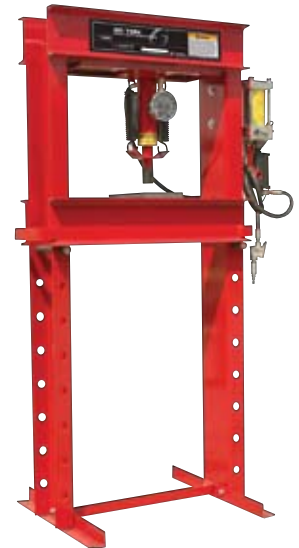
Same use and features as the model 5212 with added capacity.

## AIR/ HYDRAULIC SHOP PRESS MODELS 5212AH 12 TON CAPACITY 5220AH 20 TON CAPACITY

Same use and features as the models 5212 and 5220 with the added operating convenience of depressing an air valve. Equipped with a manual pump for use when an air supply is not available.



**MODEL 5212AH** 12 TON  
**5220AH** 20 TON (SHOWN)



**MODEL 5220PR** 20 TON

## MODEL 5220PR 20 TON CAPACITY AIR/ HYDRAULIC SHOP PRESS

Same use and features as the model 5220AH with all welded US frame construction and US built power supply.

**NOTE:** Optional accessories and kit: see pages 20-22 for full details.

MODEL #	Capacity (tons)	Overall Height (in.)	Base Width (in.)	Vertical Throat Opening (in.)	Throat Width (in.)	Ram Stroke (in.)	Ram Dia. (in.)	Cylinder Bore (in.)	Weight (lbs.)
5212	12	61.5	26	3.75 to 36	20	6.1	-	-	200
5220	20	64.5	26	1.5 to 33	24.5	6	-	-	265
5212AH	12 @ 100 PSI	61.5	26	3.75 to 36	20	6.1	-	-	205
5220AH	20 @ 100 PSI	64.5	26	1.5 to 33	24.5	6	-	-	270
5220PR	20 @ 100 PSI	66.5	26	1.5 to 33	28	4.75	1.5	2.5	300

## MODEL 5240 40 TON CAPACITY ELECTRO-HYDRAULIC SHOP PRESS

Used for various shop applications including straightening, bending, and removing/installing gears, bearings and bushings.

### FEATURES:

- > US built welded press frame to prevent excessive flexing under maximum load.
- > Reinforced head bolster for added strength.
- > 2HP Emerson electric motor, 110 volt
- > 4" Diameter gauge reads internal working pressure and force in tons.
- > Heavy duty internal return springs for fast ram retraction.
- > Pair of bed plates and ram head included.

## MODEL 5240AO 40 TON CAPACITY AIR/HYDRAULIC SHOP PRESS

Same use as the model 5240 but powered by an air/hydraulic pump.

### FEATURES:

- > US built welded press frame to prevent excessive flexing under maximum load.
- > Reinforced head bolster for added strength.
- > Air/hydraulic pump for quicker cycling times by depressing air valve at the end of a four foot air line.
- > 4" Diameter gauge reads US tons and corresponding metric tons.
- > Heavy duty springs for fast ram retraction.
- > Pair of bed plates and ram head included.

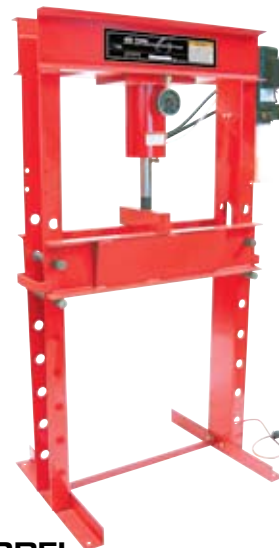
## MODEL 5240MP 40 TON CAPACITY SHOP PRESS

Same use as the model 5240 but powered by a manual operated pump.

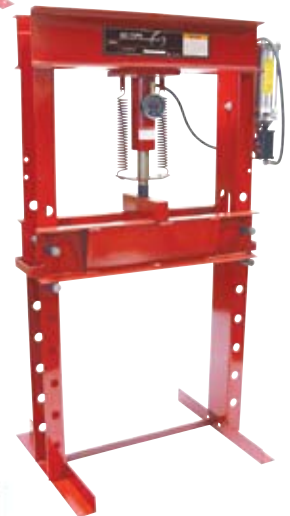
### FEATURES:

- > US built welded press frame to prevent excessive flexing under maximum load.
- > Reinforced head bolster for added strength.
- > Dual piston pump provides quicker extension of ram to the work load and easier pumping under load.
- > Pump includes overload valve to prevent against overloading.
- > Winch with non-slip safety clutch and steel cable rollers for easy raising and lowering of press bed.
- > 4" Diameter gauge reads US tons and corresponding metric tons.
- > Heavy duty springs for fast ram retraction.
- > Pair of bed plates and ram head included.

**NOTE:** Optional accessories and kit: see pages 20-22 for full details.



**MODEL 5240** 40 TON



**MODEL 5240AO** 40 TON



**MODEL 5240MP** 40 TON

MODEL #	Capacity (tons)	Overall Height (in.)	Base Width (in.)	Vertical Throat Opening (in.)	Throat Width (in.)	Ram Stroke (in.)	Ram Dia. (in.)	Cylinder Bore (in.)	Weight (lbs.)
5240	40	76.25	32	1 to 40	32	8.25	2	6	540
5240AO	40 @ 100 PSI	76.25	32	1 to 40	32	6.75	2	3.5	478
5240MP	40	76.25	32	1 to 40	32	4.5	2	3.5	470

## MODEL 5250EP 50 TON CAPACITY ELECTRO-HYDRAULIC SHOP PRESS

Used for various shop applications including straightening, bending, and removing/ installing gears, bearings and bushings.

### FEATURES:

- > US built welded press frame to prevent excessive flexing under maximum load.
- > Reinforced head bolster for added strength.
- > 2HP Emerson electric motor, 110 volt.
- > Two speed pump with remote pendant control.
- > 4" Diameter gauge reads internal working pressure and force in tons.
- > Winch with non-slip safety clutch and steel cable rollers for easy raising and lowering of press bed.
- > Heavy duty internal return springs for fast ram retraction.
- > Pair of bed plates and ram head included.



**MODEL 5250EP** 50 TON

## MODEL 5250 50 TON CAPACITY SHOP PRESS

Same use as the model 5250EP but powered by a manual operated pump.

### FEATURES:

- > US built welded press frame to prevent excessive flexing under maximum load.
- > Reinforced head bolster for added strength.
- > Dual pump pistons provide quicker ram extension to the work load and easier pumping under load.
- > Pump includes overload valve to prevent against overloading.
- > 4" Diameter gauge reads US tons and corresponding metric tons.
- > Winch with non-slip safety clutch and steel cable rollers for easy raising and lowering of press bed.
- > Heavy duty external return springs for fast ram retraction.
- > Pair of bed plates and ram head included.



**MODEL 5250** 50 TON

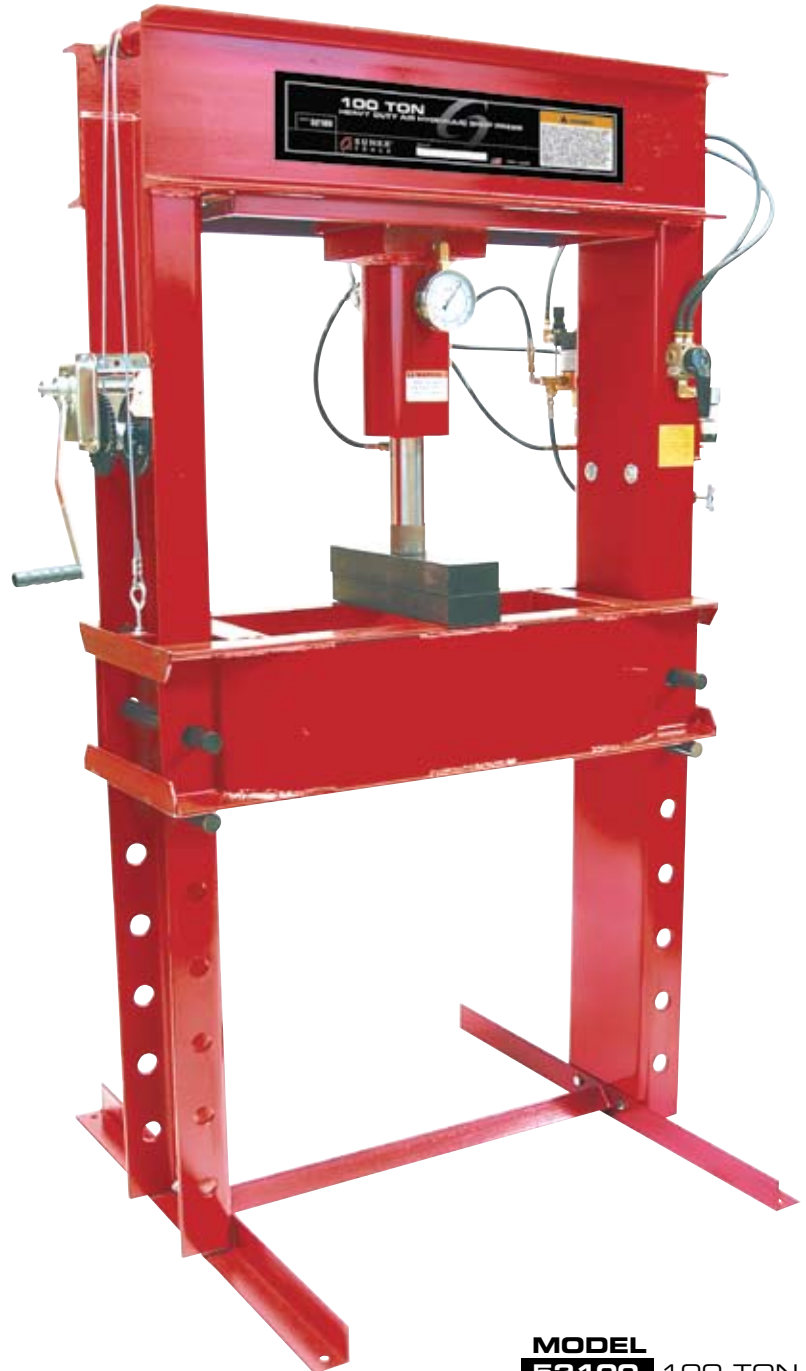
**NOTE:** Optional accessories and kit: see pages 20-22 for full details.

MODEL #	Capacity (tons)	Overall Height (in.)	Base Width (in.)	Vertical Throat Opening (in.)	Throat Width (in.)	Ram Stroke (in.)	Ram Dia. (in.)	Cylinder Bore (in.)	Weight (lbs.)
5250EP	50	74	35	1.5 to 34	35	8.25	2	6	582
5250	50	74	35	1.5 to 34	35	6.75	2	3.5	513



**MODEL 52100**  
**100 TON CAPACITY**  
**AIR/HYDRAULIC SHOP PRESS**

Used for various shop applications including straightening, bending, and removing/installing gears, bearings and bushings.



**FEATURES:**

- > US built welded press frame to prevent excessive flexing under maximum load.
- > Reinforced head bolster for added strength.
- > 1/3HP Haskel air motor for dependable service.
- > 4" Diameter gauge reads US tons and corresponding metric tons.
- > Winch with non-slip safety clutch and steel cable rollers for easy raising and lowering of press bed.
- > Heavy duty internal return springs for fast ram retraction.
- > Pair of bed plates and ram head included.

**MODEL**  
**52100** 100 TON

**NOTE:** Optional accessories and kit: see pages 20-22 for full details.

MODEL #	Capacity (tons)	Overall Height (in.)	Base Width (in.)	Vertical Throat Opening (in.)	Throat Width (in.)	Ram Stroke (in.)	Ram Dia. (in.)	Cylinder Bore (in.)	Weight (lbs.)
52100	100 @ 100 PSI	78	36	1 to 32	34	7	2.5	5.5	1106

**MODEL 52150**  
**150 TON CAPACITY**  
**AIR/HYDRAULIC SHOP PRESS**

Used for various shop applications including straightening, bending, and removing/installing gears, bearings and bushings.



**FEATURES:**

- > US built welded press frame to prevent excessive flexing under maximum load.
- > Reinforced head bolster for added strength.
- > 1/3HP Haskel air motor for dependable service.
- > 4" Diameter gauge reads US tons and corresponding metric tons.
- > Winch with non-slip safety clutch and steel cable rollers for easy raising and lowering of press bed.
- > Heavy duty internal return springs for fast ram retraction.
- > Pair of bed plates and ram head included.

**NOTE:** Optional accessories and kit: see pages 20-22 for full details.

**MODEL 52150 150 TON**

MODEL #	Capacity (tons)	Overall Height (in.)	Base Width (in.)	Vertical Throat Opening (in.)	Throat Width (in.)	Ram Stroke (in.)	Ram Dia. (in.)	Cylinder Bore (in.)	Weight (lbs.)
52150	150 @ 100 PSI	78	36	1 to 28	36	7	3	6.5	1550

**MODEL 52PAK8**  
**PRESS ACCESSORY KIT**

**FEATURES**

- > For use with presses up to 50 tons
- > Five punch sizes, 1/2", 3/4", 1", 1-1/2" and 2"
- > Two 14" x 3" x 1" steel press plates
- > One bearing shield



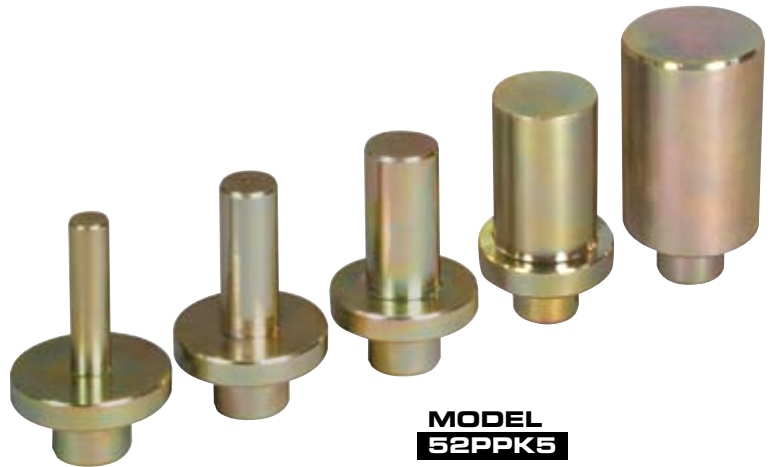
**MODEL**  
**52PAK8**

**MODEL 52PPK5**  
**5 PIECE PRESS PUNCH KIT**

**FEATURES**

- > For use with presses up to 50 tons
- > Five punch sizes, 1/2", 3/4", 1", 1-1/2" and 2"

Note: all model numbers in kit are available individually.  
See Page 21.



**MODEL**  
**52PPK5**

**MODEL 52BWK40**  
**BOLT ON WINCH KIT**  
**40 TON PRESS**

**FEATURES**

- > For use with presses up to 50 tons
- > 1/2", 1" and 2" punches
- > Five punch sizes, 1/2", 3/4", 1", 1-1/2" and 2"



**MODEL**  
**52BWK40**

## PUNCHES

### FEATURES

- > All punches are made of precision machined, cold finished 1018 steel and are yellow zinc plated for durability.

### 12, 20, 40 AND 50 TON CAPACITY

#### INCLUDES:

#### MODELS:

- 212028** 1/2" Dia. Punch (0.58 lbs.)
- 212029** 3/4" Dia. Punch (0.66 lbs.)
- 212031** 1" Dia. Punch (0.74 lbs.)
- 212032** 1-1/2" Dia. Punch (1.08 lbs.)
- 212033** 2" Dia. Punch (1.62 lbs.)

### 100 AND 150 TON CAPACITY

#### INCLUDES:

#### MODELS:

- 212105** 3" Dia. Punch (1.6 lbs.)
- 212106** 3" Dia. Punch with V-Groove (1.38 lbs.)



## BED PLATES

### INCLUDES:

#### MODELS:

- 212038** 12 and 20 Ton Bed Plates (pair) 1"x 3"x 14" (23.5 lbs.)
- 212039** 40 and 50 Ton Bed Plates (pair) 1"x 3"x 16" (27.5 lbs.)
- 212041** 100 and 150 Ton Bed Plates (pair) 2"x 4"x 20" (92 lbs.)



#### MODEL

- 212038** 12 & 20 TON
- 212039** 40 & 50 TON
- 212141** 100 & 150 TON

Note: All models have same basic construction.

## V-BLOCKS

### FEATURES

- > All v-blocks are made of precision machined, cold finished 1018 steel and are yellow zinc plated for durability, sold in pairs, excluding model 212037.

### 12 AND 20 TON CAPACITY

#### INCLUDES:

#### MODELS:

- 212027** 12 and 20 Ton V-Blocks (pair) 3"x 3"x 14"; the v-groove is 2.375" wide and .937" deep (75.5 lbs.)

- 212037** 12 and 20 Ton Deep V-Block 3/4" x 12" x 14-1/2"; the v groove is 6" wide and 7-1/4" deep (32.1 lbs.)

**NEW PRODUCT!**

### 40 AND 50 TON CAPACITY

- 212053** 40 and 50 Ton V-Blocks (pair) 3"x 3"x 16"; the v-groove is 2.625" wide and .937" deep (78.5 lbs.)

### 100 AND 150 TON CAPACITY

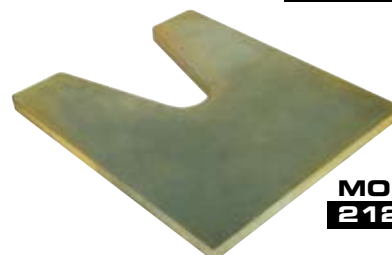
- 212104** 100 and 150 Ton V-Blocks (pair) 2"x 4"x 20"; the v-groove is 3.750" wide and 1.937" deep (89.5 lbs.)



#### MODEL

- 212027** 12 & 20 TON
- 212053** 40 & 50 TON
- 212104** 100 & 150 TON

Note: All models have same basic construction.



#### MODEL

- 212037** 12 & 20 TON

## BEARING SPLITTERS

### FEATURES

- > Splitter halves made of forged steel with sharp angled edges to get in between tightly assembled parts.
- > Splitter halves include threaded holes for the acceptance of pushing/pulling attachments.
- > Zinc plating and black oxide coating inhibit rust.

\*Bearing Splitters made in Taiwan.



Model #	Spread (in.)		Tapped Hole Size in Splitter Halves (in.)	Distance Between Adjustment Screws (in.)	Shipping Weight
	From	To			
185002	1/4	15/16	5/16"-18	1-11/16	12 oz.
185005	1/8	2	3/8"-16	2-7/16	1 Lb., 4 oz.
185007	1-3/4	5-7/8	5/8"-18	6	4 Lbs., 4 oz.
185025	1/2	4-5/8	5/8"-18	4-3/8	5 Lbs.
185026	1/2	9	5/8"-18	6	12 Lbs., 9 oz.
185050	5/8	8	1"-14	7-1/8	19 Lbs., 12 oz.

### MODEL 185055 BEARING SPLITTER SET

**NEW PRODUCT!**

### FEATURES

- > Rotomolded plastic carrying case with individual recesses for organized bearing splitter storage. Case provides easy access to splitters.
- > Set includes four of the most commonly used bearing splitters and pulley pulling tool. See chart above for specifications on models 185002, 185005, 185025, 185026 bearing splitters and model 185007 pulley pulling tool.

\*Bearing Splitter Set made in Taiwan.



**MODEL 185055**



## PRODUCT INDEX

### A

Accessories, Carts . . . . . 6  
Air Tool & Hose Rack, Carts . . . . . 8  
Accessories & Kits, Presses . . . . . 20-22

### B

Band Saw . . . . . 12  
Bench Grinder . . . . . 13  
Bed Plates, Presses . . . . . 21  
Bearing Splitters, Presses . . . . . 22

### C

Caster Creepers. . . . . 10  
Caster Replacements, Creepers . . . . . 11

### D

Drawers, Carts. . . . . 7  
Drill Press . . . . . 13

### E

EVA Foam, Carts . . . . . 8

### G

Grinder Stand. . . . . 12  
Grinders . . . . . 13

### L

Leg Extensions, Carts. . . . . 9  
Lock Set, ,Carts. . . . . 9

### M

Manual Rack, Carts . . . . . 8

### P

Press Blocks, Presses . . . . . 21  
Punches, Presses. . . . . 21

### R

Rubber Liner, Carts . . . . . 8

### S

Service Carts. . . . . 2-5  
Storage Bins, Carts . . . . . 8  
Seats . . . . . 11  
Shop Presses . . . . . 14-19

### V

Vise. . . . . 11

### W

Work Tables. . . . . 5,6

A series of horizontal lines for taking notes, organized into five groups. Each group is preceded by a pink circle on the left margin, serving as a bullet point or section marker. The first group has 4 lines, the second has 6 lines, the third has 6 lines, the fourth has 6 lines, and the fifth has 4 lines.

## SUNEX TOOLS® WARRANTY PROGRAM

### **SUNEX INTERNATIONAL, INC. WARRANTS TO ITS CUSTOMERS THAT THE COMPANY'S SUNEX TOOLS® BRANDED**

**PRODUCTS ARE FREE FROM DEFECTS IN WORKMANSHIP AND MATERIALS.** Sunex International, Inc. will repair or replace its Sunex Tools® branded products which fail to give satisfactory service due to defective workmanship or materials, based upon the terms and conditions of the following described warranty plans attributed to that specific product.

#### **Sunex Tools Warranty Plans:**

##### **> Sunex Tools® Impact Sockets, Wrenches, Screwdrivers, Specialty Tools, and Vises**

These products carry a LIFETIME warranty—effective for as long as you own the product. Sunex International, Inc. will repair or replace at our option any part or unit which proves to be defective in material or workmanship. Adapters and extra thin wall impact sockets are not covered by this warranty.

##### **> Sunex Tools® Bottle Jacks, Long Ram Jacks, and Jack Stands:**

These products carry a ONE-YEAR warranty. During this warranty period, Sunex International, Inc. will replace any unit which proves to be defective in material or workmanship.

##### **> Sunex Tools® Air Tools, Other Lifting Equipment, Rivet Guns, Bench Grinders, Drill Presses, and Band Saws:**

These products carry a ONE YEAR warranty. During this warranty period, Sunex International, Inc. will repair or replace at our option any part or unit which proves to be defective in material or workmanship. The SXC series air tools are from this warranty. SXC series tools carry a 1 year replacement warranty.

**> Sunex Tools® Torque Wrenches, Spray Guns & Spray Gun Accessories:** These products carry a 90-DAY warranty. During this warranty period, Sunex International, Inc. will repair or replace at our option any part or unit which proves to be defective in material or workmanship.

**> Sunex Tools® Creepers and Service Carts & Accessories:** These products carry an “As Is” warranty. These products are warranted, at the time of sale only, against defects in materials or workmanship that prevent their use.

**> Sunex Tools® Consumables:** A consumable product is warranted, at the time of sale only, against defects in materials or workmanship that prevent its use. Consumable products are goods reasonably expected to be used up or damaged during use, including but not limited to cutting wheels, blades and sanding pads.

#### **SPECIAL NOTE FOR APPLYING WARRANTY PLANS TO PRODUCTS PURCHASED IN SETS:**

If a product is purchased as a set, the warranty applies to the individual products within the set but not to the set as a whole. For example, if one item (e.g. an impact socket) in the set is found defective due to manufacturing workmanship, Sunex International, Inc. will replace that individual item (one socket) in the set, but not the entire set.

#### **Other important warranty information...**

- This warranty does not cover damage to equipment or tools arising from alteration, abuse, misuse, damage and does not cover any repairs or replacement made by anyone other than Sunex International, Inc. or its authorized warranty service centers. The foregoing obligation is Sunex International, Inc.'s sole liability under this or any implied warranty and under no circumstances shall we be liable for any incidental or consequential damages.
- Note: Some states do not allow the exclusion or limitation of incidental or consequential damages, so the above limitation or exclusion may not apply to you.
- To request a Return Goods Authorization (RGA), contact Sunex Tools® Service Department at 877.786.3939 or fax 864.834.6651 with the following information: your name and address, evidence of the purchase date, and description of the suspected defect. After receiving an RGA number, return equipment or parts to Sunex International, Inc., transportation prepaid. Be sure to reference the RGA number on all paperwork and packaging.
- If you have any questions about warranty service, please write to Sunex International, Inc. This warranty gives you specific legal rights and you may also have other rights which vary from state to state.
- Repair kits and replacement parts are available for many Sunex Tools® products regardless of whether or not the product is still covered by a warranty plan.



Distributed by:



[www.sunextools.com](http://www.sunextools.com)

P.O. Box 1233 • Travelers Rest, SC 29690

Sunex Tools® Service: 877.786.3939 • Toll Free: 1.800.833.7869

Fax: 864.834.7954



REF: SXCS191

Rev. 06/09/10